

SPIKE-DEVIL

TIRE DEFLATION SYSTEM By Spike Strip Mfg.



KAWASAKI



**HARLEY
DAVIDSON**



HONDA



BMW

**FITS ALL
BIKES**

PRODUCT MANUAL

**THE TRAINING IN THIS MANUAL DOES NOT
SUPERSEDE ANY POLICY OR PROCEDURE OF YOUR
DEPARTMENT**

SPIKE-DEVIL DESCRIPTION

INTRODUCTION

Spike-Devil is an accordion type spike system which has several unique features. The system folds up and rolls up into the world's smallest spike system. The frame enhances deployment, and can be reloaded and used many times.

The Spike-Devil when deployed slides across the surface in a covert style and locks into place when fully extended. If deployed upside down, and locked open it provides performance on a hard surfaces and under most conditions. Spike Devil is available in three sizes depending on the number of Strip sections included in your system.



Each system includes a winder, with a strap attached to the Spike Devil accordion frame. The system comes with a storage option which allows quick access to the Spike-Strip. The cord is 80 feet long and is heavy duty.



The system above shows the Loop Winder option and the holster storage option. A bag model design for use in motorcycles and ATV's.



The system above shows the cord reel option and the holster storage option.



ACCESS

The system should be mounted and holstered in a fashion that is ready for quick Access



To access the system, un-hook the strap. Then Remove the Cord Reel from the Holster with your non dominant hand.



Using your dominant hand pull out the Spike-Strip from the holster.

HANDLING

Notice the cord reel is in one hand and the Strip in the other hand.

The cord reel is positioned with the winder facing in to facilitate use by the other hand



Before deployment you will need some slack, pull the winder out of its slot on the cord reel and create slack by stretching your arms apart.

The cord is attached to the Spike-Strip frame closest to you.

The other side of the Spike-Strip frame is loose and is the side that expands and opens up away from your body and onto the roadway.



You can hold and deploy the Strip various ways by holding onto both sides of the strap (smaller hands) or gripping the Spike-Strip frame.

DEPLOYMENT BY SLIDING

Position the strip where deploying the Spike-Strip in a sliding fashion allows it to open and expand away from your body.



With the Strip in your hand, posture your body in a low stance, by spreading your legs by stepping one leg back and practice with a swinging motion, and letting go, the Spike-Strip unit slides onto the roadway expanding.

You can slide Spike-Strip on the ground with practice you should be able to pre-deploy the spike strip and slide it onto the other side of the road.

PRE-DEPLOYMENT

The Spike-Strip can be slid across the roadway so as to allow traffic to pass over the cord.

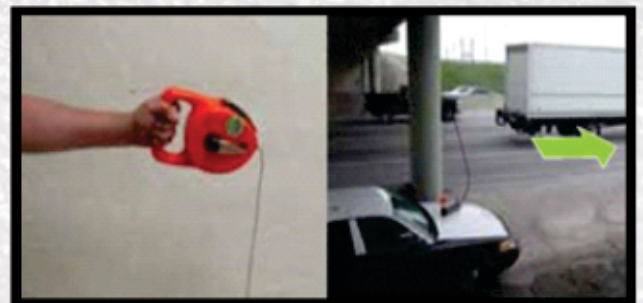
The officer can seek cover and pull the strip into the path of the target vehicle. This provides protective cover, and allows to target the far line and shoulder of the roadway. Spike Devil is unique, in that its Accordion frame allows Pre-Deployment.

DEPLOYMENT BY PULLING

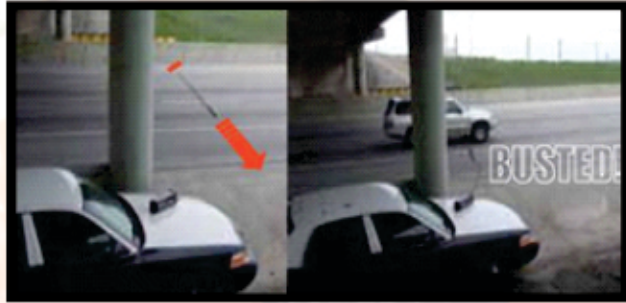
Spike-Strip device can be pulled open across the lanes of traffic by use of the cord reel.



Place or throw the Spike-Strip device on the roadside with the rope side of the unit toward you.



Unlock the handle on the cord reel, When positioned behind cover, the handle should be placed in the locked position. Traffic can pass over the rope.



When traffic is clear, and before the suspect vehicle arrives, pull the unit across the roadway into the path of the target. After the spike unit is run over, remove it from traffic with one quick, hard pull on the spool.

RETRIEVAL

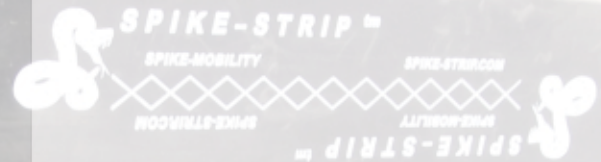
Regardless of your deployment style, have your escape route planned, always use cover. Keep your slack minimized and your arm extended.

After the spike unit is run over by the target vehicle, one hard pull on the cord reel should recover the Spike-Strip from the lane of traffic.

TRAINING UNITS

Spike-Strip systems have a unique accordion action. You can practice with your Spike-System, but to accomplish timing requires practice in traffic scenarios, Spike-Strip has created a training system that can help you do this. Spike-Strip training units allow you to practice deployment on moving vehicles without damaging tires.

NOTES



PRODUCT SERVICE

After the system has been used, it should be carefully inspected and serviced. The accordion frame must be inspected for missing spikes or a damaged section. Service might require a screwdriver.

SPIKE REPLACEMENT

Under most conditions the only service needed would be the replacement of spikes.



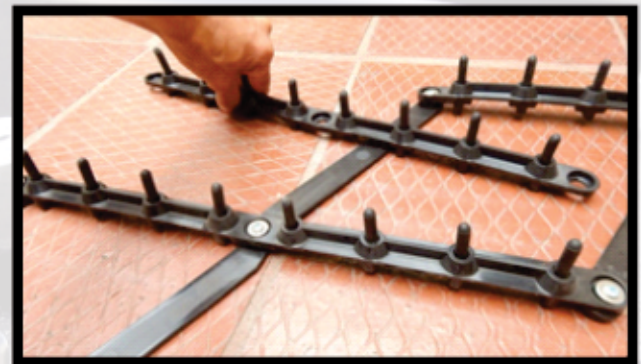
Each Spike-Strip device comes with a package of 8 replacement spike cartridges with 3 O-rings

Make sure the hole has an O-ring inserted flushed on the bottom shelf. O-rings may be BLACK or RED in color. The Spike-Devil uses a cartridge, the top half of the spike is covered with a cap/ seal. You can cover the O-rings with silicon, and the end of the exposed spike tip with water. Place the exposed portion into the Spike-Strip receiver hole, rotate until the slot on the spike aligns with the length of the strip.

Press the cartridge down into the hole. The Spike Cap seals within the Strip.

STRIP REPLACEMENT

If the system is deployed spike down, one or more sections might need to be replaced. In this case the spikes push through the bottom of the Strip into the tire damaging the section.



Take out the damaged section(s) by taking out the three screws to replace the Strip or four screws to replace the section. Tighten the screws just enough to prevent the washer from turning. Do Not Over Tighten!

INSPECT

When folding the Spike-Strip device hold it, and shake it to dislodge any grass, or debris that will prevent it from folding up properly. Wind up the Cord-reel and inspect the reel via the mouth to assure it is properly wound up and has no debris.

WARRANTY

Spike-Strip tire deflation devices are fully warranted to be free of defects in material and workmanship for life, to the original purchaser. Defective parts will be replaced or repaired free of charge.

This limited lifetime warranty also includes free replacement of sections damaged in a pursuit for a period of three (3) years from the date of purchase.

In order to maintain uniformity in your departments, any upgrades of older systems are done for the price of a replacement pack of spikes. Contact us for more info and the latest replacement parts.

SPECIFICATIONS

Specification sheet for Spike-Devil systems by Spike-Strip Mfg.

Spike-Strip system consist of a framework of multiple Strips assembled end to end so that each base is connected and will open extended like an accordion across a traffic lane. The system is designed to close by collapsing the trellis, allowing the system to roll into a compact package. A system also includes a winder with cord attached, and a storage device.

1) A.L.E.C. The System Framework has a patented locking device called A.L.E.C. which locks the system in an expanded configuration to maximize its coverage on the roadway.

2) All Systems have a cord (#3-3/32) of not less than 80 feet in length. The Cord is wound up on a cord-reel or a loop winder depending on model ordered

3) The Strip and base holds spikes with "o" rings, and caps and has washers and screws to hold the Strips together.

4) Device shall contain 8 spikes per strip and strips shall be connected end to end to make up a Spike-Strip System. (8 spikes x 7 sections for 56 spikes total normal size) (8 spikes x 9 for 72 spikes total for extended system) (8 spikes x 11 sections for 88 spikes in super extended system)

5) Spikes are 1.5" or 1.75" inch long and 3/16 inch diameter. The Surface is non reflective rough zinc plated. Tip is an anti coring tip. Each Spike has a dull edge designed to puncture not cut, and each spike has a cover to protect the spike and officer.

6) When folded the system measures 18.5 inches in length and when rolled up less than 4 inches in diameter and designed to be stored in the open end of the holster.

7) weight of unit is less than

SECTION SYSTEM SHIPPING

7 Strips 5.6Lbs. 6.4Lbs.

9 Strips 6.6Lbs. 7.4Lbs.

11 Strips 7.6Lbs. 8.4Lbs.

8) Hardware is standard off the shelf washers (5/8) and screws (#10).

9) System includes a method of storage of an end fed plastic tube or soft Cordura bag.

10) Strip is bi-directional and also omni-directional and has a rocking arm that tilts the spike as it penetrates the tire and allows it to follow the rotation of the tire to exit the strip, and cause minimal damage.

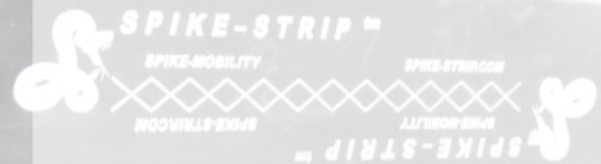
11) Strip is reusable

12) strip is pre-assembled in three standard lengths.

13) Strip is officer serviceable in the field.

14) Device shall extend to 9ft (normal size) with 7 sections. Device extends to 12ft (extended size) with 9 sections. System extends to 15 ft (extra extended size) with 11 sections.

NOTES



**GO ONLINE FOR TRAINING
RESOURCES CLASSROOM
TRAINING MANUAL
DOWNLOADS**

WWW.SPIKEDEVIL.NET