

SPIKE-DEVIL

TIRE DEFLATION SYSTEM By Spike Strip Mfg.



KAWASAKI



***HARLEY
DAVIDSON***



HONDA



BMW

***FITS ALL
BIKES***

CLASSROOM E-TRAINING

**THE TRAINING IN THIS MANUAL DOES NOT
SUPERSEDE ANY POLICY OR PROCEDURE OF YOUR
DEPARTMENT**

USER ACCEPTS LIABILITY

All departments should have a policy before the use of Spikes. It can be a very simple document and it can borrow from State Procedures on pursuits.

In the following classroom pages, Spike Strip Mfg. describes the overall and basic use of the spike System, and saves the hands on use for outdoors in a parking lot.

These pages discuss the protective cover and concealment, proper set up at the deployment site and how to inspect and service your equipment.

We recommend you follow along in the training manual, however note that any sections marked (inst) are special instructor aids which are not covered in the manual. This is reserved for you to explain your recommended deployment locations and methods. If you are self taught then this portion will also apply to you, and help you develop a deployment strategy.

TRAINING RESOURCES

Departmental supervisors must train on the proper use of the product and include departmental use of force, pursuit policies and policies on Pursuit termination devices.

Spike-Strip Mfg. offers two websites. www.spikedevil.com and www.spikedevil.net



The spikedevil.net site is a training site with the manuals on line and navigable in the field from a smart phone. All images can be downloaded, and the illustrations are all pdf for PowerPoint. Most titles in this training manual have a video for viewing online or at our youtube site. The site has the complete training program on a playlist. Henry DeVilliers is the channel name.

TRAINING OVERVIEW

A complete Spike System training should provide an officer with an introduction to tire deflation devices, with your departmental policies regarding the use of such device.

Spike-Strip Mfg. also recommends two methods of hands on training. Basic training can be conducted in a parking lot. More advanced training on a closed road we call Track Training.

CLASSROOM / E-TRAINING

A Spike System class should provide an officer an introduction to the safe use of tire deflation devices, and your departmental policies regarding the use of such a device.

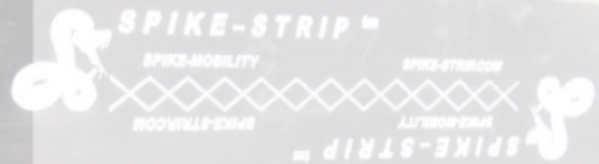
PARKING LOT TRAINING

Your Spike-Devil system can be used for training purposes in a parking lot. In the tabs labeled Parking lot training, we go over the basic operation and inspection in a series of Training scenarios. You can train in a Church parking lot, school parking lot, undeveloped street, or any area which is not in active use and can be closed or secured.

TRACK TRAINING

A more advanced training method can be conducted on a roadway with moving cars and special "Rubber-Spiked" system. In the tab labeled Track Training we go over the methods, objectives and tips on conducting such a class.

NOTES



CLASSROOM

The Classroom portion is where we study the effective and safe use of the product within the guidelines of our departmental policy. As an instructor, it will be your responsibility to provide training for your officers.

Take a close-up look of the deployment site and discuss the safe locations to use. Understand the traffic scenarios and how it might affect your deployment. Consider, traffic, lanes, direction of travel, and opposite direction of travel.

APPROVED DEPLOYMENT LOCATIONS

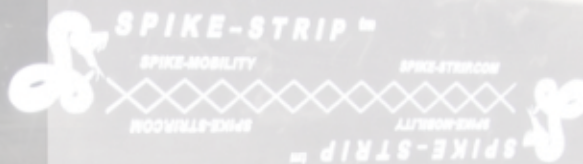
Know the traffic scenarios in your area and those



favorable for deployment of Tire Deflation devices. Not all pursuits are favorable for use of Tire Deflation devices.

You can use internet mapping software to look at these locations and document the scenarios and how it might affect cover and deployment.

DEPLOYMENT LOCATIONS



COVER vs CONCEALMENT

When tasked to deploy a system you should know the difference between concealment and cover. In these example pictures and in the training video we are going to show you samples of both and describe them to you using simulated scenarios.

The curve itself produces concealment, the poles and cement barriers add to the covert deployment.

HIGH RISK DEPLOYMENT

The first step in making concealment and cover work for you, is to be covert in your deployment. A high visibility deployment is where a patrol car, the officer, and the system are used in a manner where they have a visible presence to traffic. High visibility deployments can provoke an adverse reaction by the target vehicle, and creates a high risk. You might be behind protective cover, however traffic and pursuit units are not. In several portions of this training we will show you best practice of use of the Spike Devil for a covert operation.



This curve provides physics for the vehicle, taking it away from the deployment officer. Curves can add a margin of safety. This is an example of concealment and low visibility; however, it is not protective cover.

CONCEALMENT EXAMPLES

CONCEALMENT

In the Spike Devil video the deployment officer is able to see the orange Challenger before the curve, he spikes the Challenger as it comes out of the curve.

PROTECTIVE COVER

Protective cover requires bridges, guard rails, concrete barriers and other solid objects that can stop a car.



In the picture above, is a concrete wall, large poles, which can be used for protective cover. This is protective cover and concealment.



In this picture you can see a bridge This provides some protective cover for the officer. If you find a place to park the patrol car, it provides a higher degree of concealment.



A pre-planned deployment sites serve as Landmarks for officers in pursuit. The officers can identify these locations, slow down and give room for deployment and recovery of the Spike Devil.

PROTECTIVE EXAMPLES

PURSUIT PREVENTION

Spike Strip Mfg. Offers products that can be placed under a stationary car, so that if the car is moved it provides deflation of the tires. This is a way of preventing a pursuit from occurring in a traffic Stop, Checkpoint, warrant service, and other applications.



SPIKE-DEVIL Tact-Strip 2

The Tact-Strip is compact and can be serviced in the field with no special tools. The Spikes for the Spike Devil 2 and the Tact Strip are interchangeable.



SPIKE-DEVIL
Spike-Strip 2

Spike Strip 2 folds up in a compact form and when deployed opens up wide to be deployed. The system is designed so that it can be swung under the car in front of the tire with little effort. This keeps the officer focused on the car, driver for better situational awareness. Spike devil 2 can be reloaded in the field with spikes, and does not require special tools.

TACT STRIP

Tact-Strip is a compact Tire deflator designed to be deployed on a car and hidden in place. The car should not have a driver positioned to drive.

